



Principals Connect

Sharpen your vision as a school leader

Leaders never stop learning. School Principals, in particular, are always seeking opportunities to learn, renew and develop their leadership capacity.

Principals Connect has been co-designed by ISV and Project Zero at the Harvard Graduate School of Education to help you discover new ideas, strategies and ways of thinking.

It builds on ISV's well-established partnership with world-leading experts at Project Zero to give you a unique opportunity to:

- Learn proven techniques to strengthen and sharpen your leadership
- Join a community of practice and make meaningful connections with local colleagues and Principals from across the globe
- Immerse yourself in a week-long 'Leadership: An Evolving Vision' intensive at Harvard University in Boston
- Unpack the latest research on adaptive cultures to help manage change, identify high-quality classroom practice, better engage with families and more
- Receive personalised coaching from Marga Biller (Harvard Graduate School of Education) throughout the year to identify your challenges, finesse strategic initiatives and strengthen your vision.

Principals Connect has proven to be a wonderful experience on many levels.

Access to the wisdom of highly knowledgeable staff at Project Zero at the Harvard Graduate School of Education – along with the Leadership: An Evolving Vision (LEV) institute – is invaluable.

Principals Connect builds knowledge, provokes thinking, teases out insights through the coaching process and builds a positive collegial network.



Allan Shaw
Former Principal, The Knox School

Leadership: An Evolving Vision An immersive, week-long intensive in Boston

A cornerstone of Principals Connect is 'Leadership: An Evolving Vision (LEV)' – a week-long intensive delivered by the Principals' Center at the Harvard Graduate School of Education in Boston.

LEV provides school leaders with an opportunity to reflect, stretch and strengthen their leadership skills. Participants will work with experts in school leadership to:

- Master effective strategies for building successful schools
- Discover new methods for improving individual, group and school performance
- Learn strategies to foster a positive school culture, value diversity and communicate effectively with your school community
- Study proven techniques to increase personal growth and improve relationships with colleagues and staff
- Explore organisational processes to improve learning and life chances of students under your charge.

Faculty



Marga Biller

Senior Project Director, Learning Innovations Laboratory
Harvard Graduate School of Education

As Senior Project Director at the Learning Innovations Laboratory at the Harvard Graduate School of Education, Marga has supported organisations to integrate research in human and organisational development into their learning strategies and talent development processes. In her consulting practice, Marga focuses on helping organisations develop learning strategies that help them align their development initiatives with their business challenges.

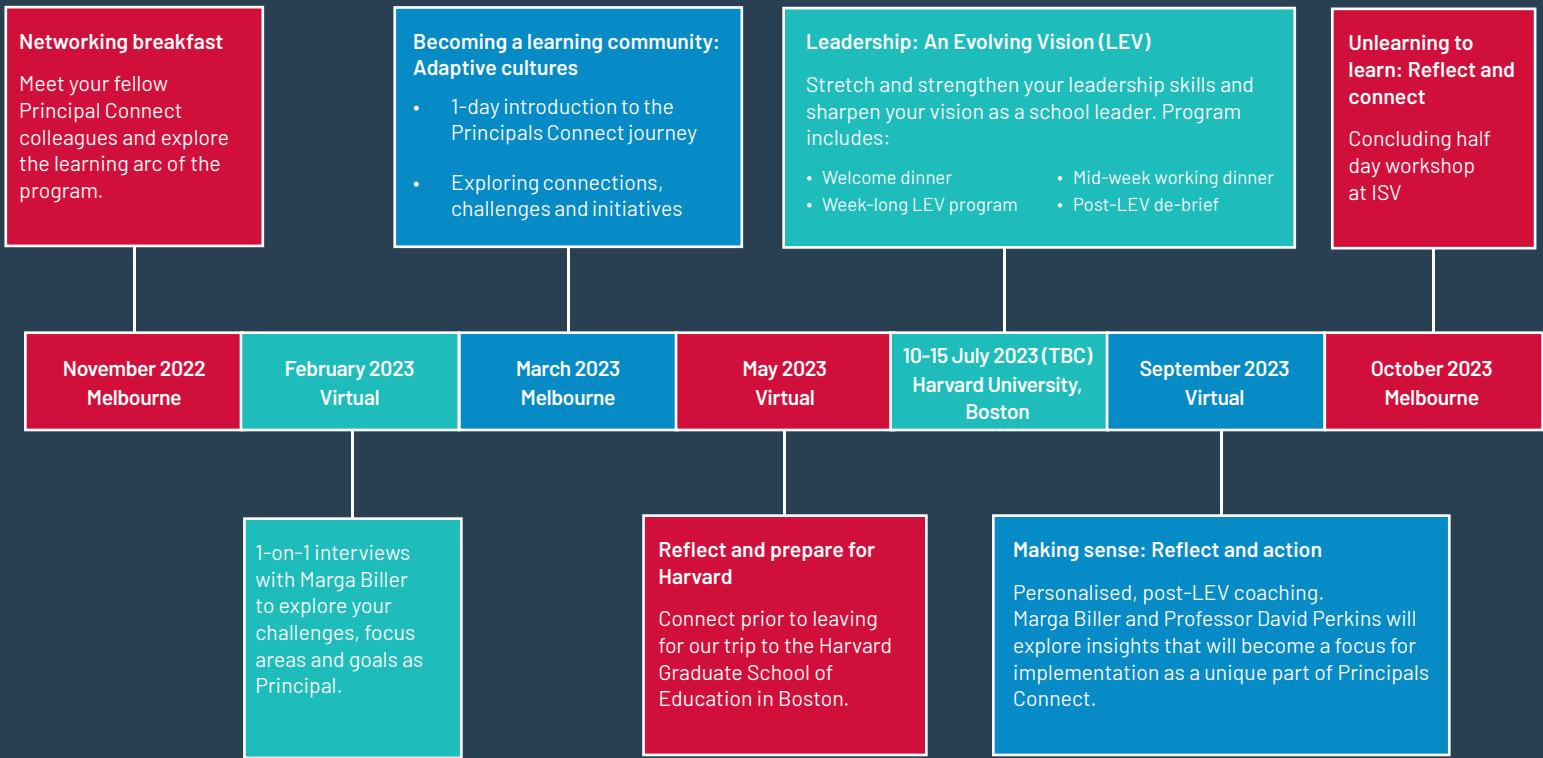


Kieren Noonan

Head of Innovation & Learning
Independent Schools Victoria

Kieren is an experienced innovative education professional with extensive experience of working in educational leadership and strategically delivering innovative products, solutions and initiatives. He is skilled in education leadership and management, training delivery, process management and product and service design.

Program



Pricing

	Pricing
ISV Members	\$9,000
ISV Affiliates (other AIS Members)	\$10,500

Please note: this does not include airfares to or accommodation in Boston.

Audience

This program is designed for school Principals in the first 3-5 years of their position.

Delivery mode

A combination of in-person sessions at ISV in Melbourne, a week-long intensive at Harvard University in Boston, as well as some virtual meetings.

More information

Kieren Noonan

Head of Innovation & Learning
Independent Schools Victoria
kieren.noonan@is.vic.edu.au



**Independent
Schools** Victoria