



LEAD School Effectiveness Surveys

Listen. Evaluate. Act. Deliver.

Is your school taking the LEAD?

ISV's LEAD School Effectiveness Surveys are an essential school improvement tool, developed especially for Independent schools.

The full suite of LEAD surveys provide a powerful measure of school effectiveness, enabling you to review your school's performance benchmarked against other Independent schools.

With valuable data from students, staff and parents, our LEAD surveys enable you to make informed decisions based on actionable insights from your school community.

Why take the LEAD?

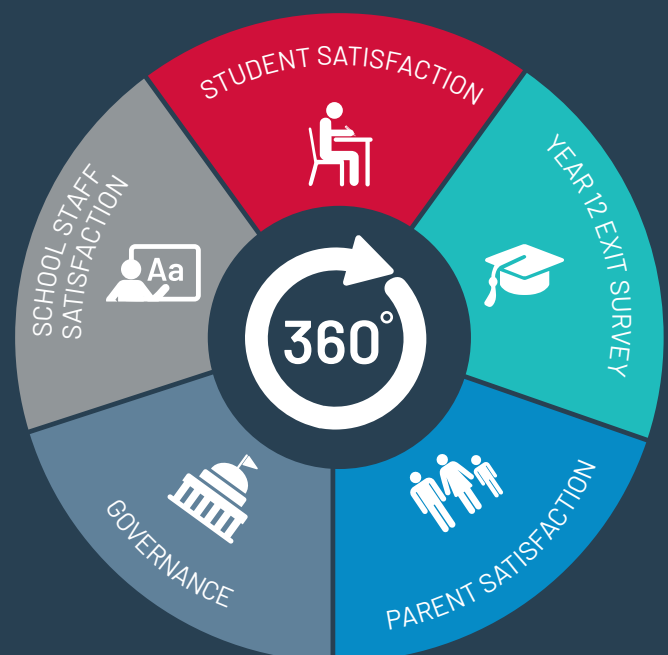
- 1 Gain a comprehensive insight of your school's performance through the eyes of students, staff and parents.
- 2 Internally benchmark your school's performance over the years to measure and monitor growth and make data-informed decisions.
- 3 Externally benchmark your school's performance against almost 400,000 respondents from Victorian Independent schools, as well as a segmented benchmark group similar to your school.
- 4 Interrogate your data and construct timely visual stories for your stakeholders using isAnalyse, ISV's custom-built interactive dashboard.
- 5 Obtain key insights into core elements of an effective school, using survey instruments validated by the University of Cambridge.

What does LEAD measure?

The full suite of LEAD surveys measure:

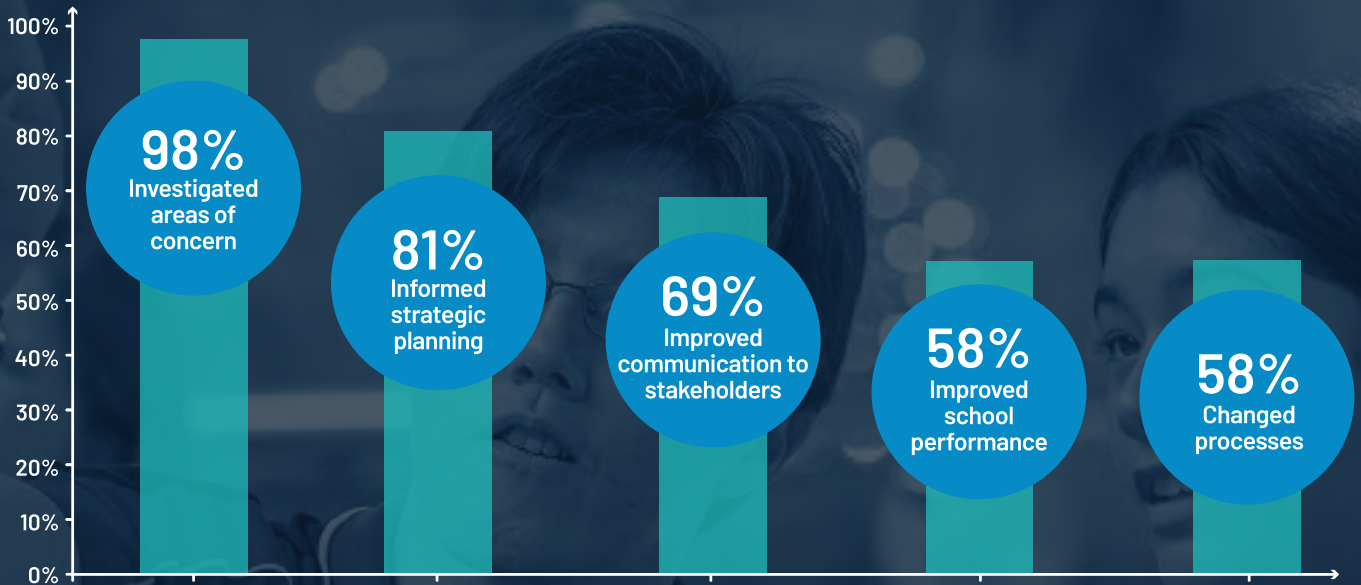
- Student satisfaction with their learning, pastoral care, peer support, discipline and safety, and more
- Year 12 exit survey, measuring students' satisfaction with their time at your school
- School staff satisfaction with their workplace and the school in general
- Parent opinions on your school and its learning outcomes
- The health of your school's governance system.

We encourage schools to participate in the full suite of surveys to ensure you gain the full benefit. However, schools can participate in any number of individual surveys.



How are schools using LEAD to improve?

On a 0-10 scale, those surveyed were highly satisfied with ISV's LEAD School Effectiveness Surveys (8.1 out of 10) and were strongly likely to recommend it to other schools (8.0 out of 10).

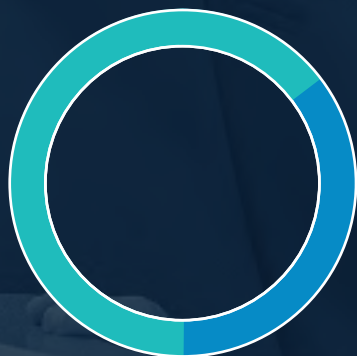


Survey conducted in April 2023 among LEAD schools 2019-2022 (n=26)

Who uses LEAD?

Almost 170 ISV Member Schools have participated in ISV's LEAD surveys, one or more times, over the last 17 years.

Location



Metro (71%)
Regional (29%)

School size by enrolment



0 - 100 (25%)
101 - 1000 (49%)
1000 + (26%)

How to use the LEAD surveys?

LEAD survey questions are grouped into proven domains of school effectiveness, validated by the University of Cambridge. This helps you interpret your data and provides the basis for school improvement.

By looking across domains and comparing your school's results to the benchmark, school leaders can easily distinguish areas to inform strategic planning.

LEAD domains



Teaching & Learning

- Academic program
- Student learning
- Quality of teaching and learning
- Teaching practice
- Teacher /student rapport
- Transition




Engagement & Wellbeing

- Peer relationships
- Parent Involvement and satisfaction
- Pastoral care
- Personal and professional development
- School ethos



School Leadership

- Feedback
- Goal alignment
- Leadership and morale
- Overall satisfaction



School Operations

- Discipline and safety
- Resources
- Technology
- Health of the school board

What can you expect?

- We take the hard work out of surveying your stakeholders.
- We organise your results into key domains of school effectiveness.
- We provide survey reports to give you a simple and efficient explanation of results.
- We benchmark your findings and provide you with access to a custom-built analytics platform to interrogate your data.

More information

research.department@is.vic.edu.au

is.vic.edu.au/LEAD

